

DIN 934 - UNI 5588 Hexagon Nuts

DIN 934 - UNI 5588 Sechskantmuttern

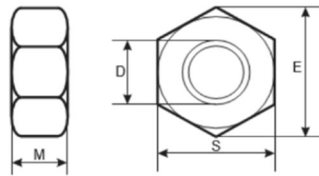
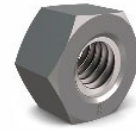
DIN 934 - UNI 5588 Écrous hexagonaux

DIN 934 - UNI 5588 Dadi esagonali

DIN 934 - UNI 5588 Tuercas hexagonales

Quality: I8I / 8 / 10 / 12

Coating Type: Zinc Plated / Hot Dip Galvanized / Geomet / Black Oxide



Size – D	Pitch (p)	E (Min.)	S (Min.)	S (Max.)	M (Min.)	M (Max.)	WEIGHT IN KG PER 1000 PCS
M6	1	11.1	9.8	10	4.9	5.2	2.5
M8	1.25	14.4	12.7	13	6.4	6.8	5.2
M10	1.5	17.8	15.7	16	8	8.4	11.6
M12	1.75	20	17.7	18	10.4	10.8	17.3
M16	2	26.8	23.7	24	14.1	14.8	33.3
M18	2.5	29.6	26.2	27	15.1	15.8	49.4
M20	2.5	33	29.2	30	16.9	18	64.4
M22	2.5	37.3	33	34	18.1	19.4	79
M24	3	39.6	35	36	20.2	21.5	110
M27	3	45.2	40	41	22.5	23.8	165
M30	3.5	50.9	45	46	24.3	25.6	223
M33	3.5	55.4	49	50	27.4	26.7	288
M36	4	60.8	53.8	55	29.4	31	393
M39	4	66.4	58.8	60	31.8	33.4	502
M42	4.5	71.3	63.1	65	32.4	34	652
M45	4.5	77	68.1	70	34.4	36	800
M48	5	82.6	73.1	75	36.4	38	977
M52	5	88.3	78.1	80	40.4	42	1220
M56	5.5	93.6	82.8	85	43.4	45	1420
M60	5.5	99.2	87.8	90	46.4	48	1690
M64	6	104.9	92.8	95	49.1	51	1980

Intenfa Group Limited Company

www.intenfa.cominfo@intenfa.com

INTENFA GmbH

www.intenfa.deinfo@intenfa.de

INTENFA UK LIMITED

www.intenfa.co.uksales@intenfa.co.uk

INTENFA ED S.R.L.

www.intenfa.comromania@intenfa.com

DIN 6915 EN 14399-4 Hexagon Nuts

DIN 6915 EN 14399-4 Sechskantmuttern

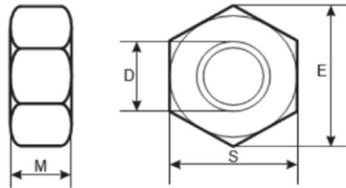
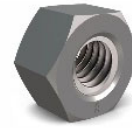
DIN 6915 EN 14399-4 Écrous hexagonaux

DIN 6915 EN 14399-4 Dadi esagonali

DIN 6915 EN 14399-4 Tuercas hexagonales

Quality: 10 / 12

Coating Type: Zinc Plated / Hot Dip Galvanized / Geomet / Black Oxide



Size – D	Pitch (p)	E (Min.)	S (Min.)	S (Max.)	M (Min.)	M (Max.)	WEIGHT IN KG PER 1000 PCS
M12	1.75	23.91	21.6	22	9.64	10	23.3
M16	2	29.56	26..16	27	12.3	13	44.8
M20	2.5	35.03	31	32	14.9	16	73.9
M22	2.5	39.55	35	36	16.9	18	104
M24	3	45.2	40	41	17.7	19	155
M27	3	50.85	45	46	20.7	22	224
M30	3.5	55.37	49	50	22.7	24	300
M36	4	66.44	58.8	60	27.7	29	515

Intenfa Group Limited Company

www.intenfa.cominfo@intenfa.com

INTENFA GmbH

www.intenfa.deinfo@intenfa.de

INTENFA UK LIMITED

www.intenfa.co.uksales@intenfa.co.uk

INTENFA ED S.R.L.

www.intenfa.comromania@intenfa.com

ISO 4032 Hexagon Nuts

ISO 4032 Sechskantmuttern

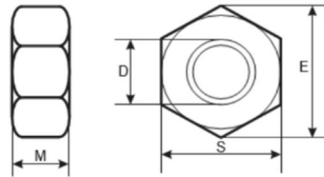
ISO 4032 Écrous hexagonaux

ISO 4032 Dadi esagonali

ISO 4032 Tuercas hexagonales

Quality: I8I / 8 / 10 / 12

Coating Type: Zinc Plated / Hot Dip Galvanized / Geomet / Black Oxide



Size – D	Pitch (p)	E (Min.)	S (Min.)	S (Max.)	M (Min.)	M (Max.)	WEIGHT IN KG PER 1000 PCS
M8	1.25	14.4	12.7	13	6.4	6.8	5.2
M10	1.5	17.8	15.7	16	8	8.4	11.6
M12	1.75	20	17.7	18	10.4	10.8	17.3
M16	2	26.8	23.7	24	14.1	14.8	33.3
M18	2.5	29.6	26.2	27	15.1	15.8	49.4
M20	2.5	33	29.2	30	16.9	18	64.4
M22	2.5	37.3	33	34	18.1	19.4	79
M24	3	39.6	35	36	20.2	21.5	110
M27	3	45.2	40	41	22.5	23.8	165
M30	3.5	50.9	45	46	24.3	25.6	223
M33	3.5	55.4	49	50	27.4	26.7	288
M36	4	60.8	53.8	55	29.4	31	393
M39	4	66.4	58.8	60	31.8	33.4	502
M42	4.5	71.3	63.1	65	32.4	34	652
M45	4.5	77	68.1	70	34.4	36	800
M48	5	82.6	73.1	75	36.4	38	977
M52	5	88.3	78.1	80	40.4	42	1220
M56	5.5	93.6	82.8	85	43.4	45	1420
M60	5.5	99.2	87.8	90	46.4	48	1690
M64	6	104.9	92.8	95	49.1	51	1980

Intenfa Group Limited Company

www.intenfa.cominfo@intenfa.com

INTENFA GmbH

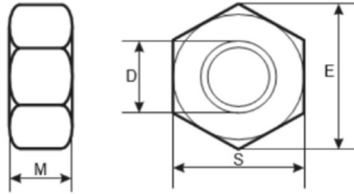
www.intenfa.deinfo@intenfa.de

INTENFA UK LIMITED

www.intenfa.co.uksales@intenfa.co.uk

INTENFA ED S.R.L.

www.intenfa.comromania@intenfa.com

DIN 936 Hexagon Nuts**DIN 936 Sechskantmuttern****DIN 936 Écrous hexagonaux****DIN 936 Dadi esagonali****DIN 936 Tuercas hexagonales****Quality: I8I / 8****Coating Type: Zinc Plated / Hot Dip Galvanized / Geomet / Black Oxide**

Size – D	Pitch (p)	E	S	M	WEIGHT IN KG PER 1000 PCS
M8	1.25	14.38	13	5	4
M10	1.5	18.9	17	6	8.6
M12	1.75	21.1	19	7	12.1
M16	2	26.75	24	8	20.1
M18	2.5	29.56	27	9	29.6
M20	2.5	32.95	30	9	36.3
M24	3	39.55	36	10	58
M27	2	45.2	40	12	90
M30	2	51.28	46	12	111
M33	2	55.37	50	14	155
M36	3	61.31	55	14	190
M39	3	66.44	60	16	260
M42	3	72.61	65	16	307
M48	3	83.91	75	18	460

Intenfa Group Limited Company

www.intenfa.cominfo@intenfa.com

INTENFA GmbH

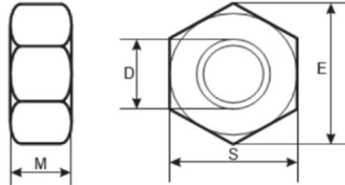
www.intenfa.deinfo@intenfa.de

INTENFA UK LIMITED

www.intenfa.co.uksales@intenfa.co.uk

INTENFA ED S.R.L.

www.intenfa.comromania@intenfa.com

DIN 555 Hexagon Nuts**DIN 555 Sechskantmuttern****DIN 555 Écrous hexagonaux****DIN 555 Dadi esagonali****DIN 555 Tuercas hexagonales****Quality: I8I / 8****Coating Type: Zinc Plated / Hot Dip Galvanized / Geomet / Black Oxide**

Size – D	Pitch (p)	E (Min.)	S	M	WEIGHT IN KG PER 1000 PCS
M8	1.25	14.2	13	6.5	4.62
M10	1.5	18.72	17	8	10.9
M12	1.75	20.88	19	10	15.9
M16	2	26.17	24	13	30.8
M20	2.5	32.95	30	16	60.3
M22	2.5	35.03	32	18	80.2
M24	3	39.55	36	19	103
M27	3	45.2	41	22	154
M30	3.5	50.85	46	24	216
M33	3.5	55.37	50	26	271
M36	4	60.79	55	29	369
M39	4	66.44	60	31	472
M42	4.5	72.09	65	34	610
M45	4.5	77.74	70	36	750
M48	5	83.39	75	38	924
M52	5	89.04	80	42	1130
M56	5.5	94.47	85	45	1350
M60	5.5	100.12	90	48	1600
M64	6	105.77	95	51	1880

Intenfa Group Limited Company

www.intenfa.cominfo@intenfa.com

INTENFA GmbH

www.intenfa.deinfo@intenfa.de

INTENFA UK LIMITED

www.intenfa.co.uksales@intenfa.co.uk

INTENFA ED S.R.L.

www.intenfa.comromania@intenfa.com

ASME/ANSI B18.2.2 - A194 2H Heavy Hexagon Nuts

ASME/ANSI B18.2.2 - A194 2H Sechskantmuttern

ASME/ANSI B18.2.2 - A194 2H Écrous hexagonaux

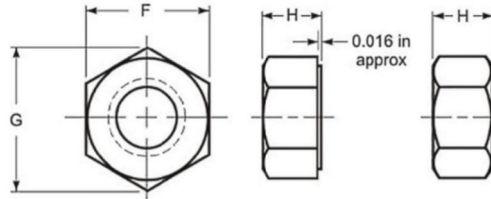
ASME/ANSI B18.2.2 - A194 2H Dadi esagonali

ASME/ANSI B18.2.2 - A194 2H Tuercas hexagonales



Quality: 2H

Coating Type: Zinc Plated / Hot Dip Galvanized / Geomet / Black Oxide



Diameter	F			H			G	
	Nom	max	min	Nom	max	min	max	min
1/4	1/2	0.500	0.488	15/64	0.250	0.218	0.577	0.556
5/16	9/16	0.562	0.546	19/64	0.314	0.280	0.650	0.622
3/8	11/16	0.688	0.669	23/64	0.377	0.341	0.794	0.762
7/16	3/4	0.750	0.728	27/64	0.441	0.403	0.866	0.768
1/2	7/8	0.875	0.850	31/64	0.504	0.464	1.010	0.969
9/16	15/16	0.938	0.909	35/64	0.568	0.526	1.083	1.037
5/8	1 1/16	1.062	1.031	39/64	0.631	0.587	1.227	1.175
3/4	1 1/4	1.250	1.213	47/64	0.758	0.710	1.443	1.382
7/8	1 7/16	1.438	1.394	55/64	0.885	0.833	1.660	1.589
1	1 5/8	1.625	1.575	35/64	0.575	0.519	1.876	1.796
1 1/8	1 13/16	1.812	1.756	1 7/64	1.139	1.079	2.093	2.002
1 1/4	2	2.000	1.938	1 7/32	1.251	1.187	2.309	2.209
1 3/8	2 3/16	2.188	2.119	1 11/32	1.378	1.310	2.526	2.416
1 1/2	2 3/8	2.375	2.300	1 15/32	1.505	1.433	2.742	2.622
1 5/8	2 9/16	2.562	2.481	1 19/32	1.632	1.556	2.959	2.828
1 3/4	2 3/4	2.750	2.663	1 23/32	1.759	1.679	3.175	3.035
1 7/8	2 15/16	2.938	2.844	1 27/32	1.886	1.802	3.392	3.242
2	3 1/8	3.125	3.025	1 31/32	2.013	1.925	3.608	3.449
2 1/4	3 1/2	3.500	3.388	2 13/64	2.251	2.155	4.041	3.862
2 1/2	3 7/8	3.875	3.750	2 29/64	2.505	2.401	4.474	4.275
2 3/4	4 1/4	4.250	4.113	2 45/64	2.759	2.647	4.907	4.688
3	4 5/8	4.625	4.475	2 61/64	3.013	2.893	5.340	5.102
3 1/4	5	5.000	4.838	3 3/16	3.252	3.124	5.774	5.515
3 1/2	5 3/8	5.375	5.200	3 7/16	3.506	3.370	6.207	5.928
3 3/4	5 3/4	5.750	5.563	3 11/16	3.760	3.616	6.640	6.341
4	6 1/8	6.125	5.925	3 15/16	4.014	3.862	7.073	6.755
4 1/4	6 1/2	6.500	6.283	4 3/16	4.268	4.152	7.506	6.755
4 1/2	6 7/8	6.875	6.650	4 7/16	4.522	4.400	7.939	7.581
5	7 5/8	7.625	7.375	4 15/16	5.030	4.896	8.805	8.408
5 1/2	8 3/8	8.375	8.100	5 7/16	5.538	5.392	9.671	9.234
6	9 1/8	9.125	8.825	5 15/16	6.046	5.888	10.537	10.060

Intenfa Group Limited Company

www.intenfa.com

info@intenfa.com

INTENFA GmbH

www.intenfa.de

info@intenfa.de

INTENFA UK LIMITED

www.intenfa.co.uk

sales@intenfa.co.uk

INTENFA ED S.R.L.

www.intenfa.com

romania@intenfa.com